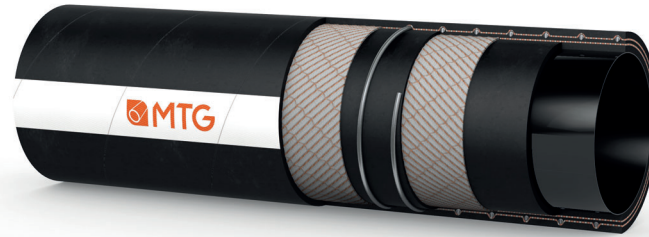




MANIFATTURA TUBI GOMMA S.p.A.
 Grisignano di Zocco, 36040 (VI) ITALY
 T. +39 0444.614755 | info@mtgspa.com
 www.mtgspa.com



APPLICATION

- Flexible multipurpose hose "Full Ohm" for working areas requiring utmost safety.
- Perfect technical solution for handling cosmetic, pharmaceutical and highly flammable chemical products.
- Execution complying with EN 12115: 2011.
- Engineered to ensure dissipation of electrostatic charges not only on the surfaces (tube and cover $R < 10^6 \Omega$) but also through the hose wall ($R < 10^9 \Omega$).

CONSTRUCTION

TUBE

- PFA (Perfluoroalkoxy), fully fluorinated, mirror-smooth, black colour, antistatic ($R < 10^6 \Omega$), patented.
- Compliance: USP Class VI, FDA Standards, Regulation EU n. 10/2011, ISO 10993-4, -10, -11, non-cytotoxic according to ISO 10993-Part 5.

REINFORCEMENT

- High strength plies of synthetic cord.
- Embedded steel helix wire.
- Copper wires on request.

COVER

- Synthetic rubber, black colour, resistant to abrasion and ageing, antistatic ($R < 10^6 \Omega$), smooth, cloth finish.

PATENTS

- E.P. 1450092.

SAFETY FACTOR

- ≥ 4 times working pressure.

TEMPERATURE RANGE

- In accordance with EN 12115: 2011.

MAIN BENEFITS

- The fluorinated inner liner ensures utmost chemical and temperature resistance, excellent impermeability and contamination-free transport of the fluid conveyed.
- Hose in accordance with EC 1935/2004 and 2023/2006/EC (GMP).
- The MTG production cycle is free from animal derived ingredients, phthalates, adipates and materials subject to restrictions according to EC 1907/2006 (REACH).
- Non-plasticized inner tube.

STERILIZATION

- Steam disinfection, in an open circuit, with peaks up to +164°C for max. 20 minutes.

ELECTRICAL PROPERTIES

- Electrical resistance through the hose wall: $R < 10^9 \Omega$.
- Identification symbol:
 - Ω/T for version without copper wires;
 - M/T for version with copper wires.

NOTE

- Please check recommendations and instructions mentioned in the MTG "use and maintenance guideline for PFA/MFA hoses".
- Not autoclavable.

MARKING

- Embossed tape according to EN 12115: 2011, lengthwise.



TECHNICAL SPECIFICATIONS

SIZE TOLERANCES: I.D.: EN 12115 - Wall thickness: EN 12115 - Length: ISO 1307

| Inner Diameter mm | Outer diameter mm | Wall thickness mm | Working pressure BAR | Burst pressure BAR | Vacuum BAR | Min. bending radius (Static) mm | Min. bending radius (Dynamic) * mm | Approx. weight kg/m | Max. length m |
|----------------------|----------------------|----------------------|-------------------------|-----------------------|---------------|---------------------------------------|------------------------------------------|------------------------|------------------|
| 13 | 25 | 6.0 | 10 | 40 | -0.9 | 135 | - | 0.51 | 20 |
| 19 | 31 | 6.0 | 10 | 40 | -0.9 | 188 | - | 0.67 | 30 |
| 25 | 37 | 6.0 | 10 | 40 | -0.9 | 225 | - | 0.88 | 30 |
| 32 | 45 | 6.5 | 10 | 40 | -0.9 | 262 | - | 1.16 | 30 |
| 38 | 51 | 6.5 | 10 | 40 | -0.9 | 338 | - | 1.43 | 30 |
| 51 | 65.5 | 7.25 | 10 | 40 | -0.9 | 412 | - | 1.95 | 30 |
| 63.5 | 79.5 | 8.0 | 10 | 40 | -0.9 | 450 | - | 2.75 | 20 |
| 76 | 92 | 8.0 | 10 | 40 | -0.9 | 525 | - | 3.20 | 20 |
| 100 | 117 | 8.5 | 10 | 40 | -0.9 | 700 | - | 4.60 | 20 |

(* In case of dynamic application please contact our Technical Dept.
 Above technical data are referring to application at room temperature (+20°C). Other sizes and colours are available upon request. Please contact our Sales Department.

