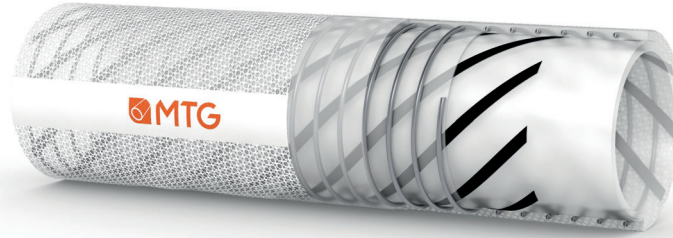




MANIFATTURA TUBI GOMMA S.p.A.
 Grisignano di Zocco, 36040 (VI) ITALY
 T. +39 0444.614755 | info@mtgspa.com
 www.mtgspa.com



APPLICATION

- Silicone hose for suction of air mixed with non-abrasive high purity powders.
- Suitable for process applications requiring a tight bending radius and easy handling.
- Normally used for vacuum cleaners in pharmaceutical and cosmetic industries.
- Special version made with carbon fiber fabric to dissipate the electrostatic charges created by the friction of the powders on the hose walls.

CONSTRUCTION

TUBE

- Translucent silicone rubber (code silicone 3362PT), pharmaceutical and food quality, odourless and tasteless, mirror-smooth.

REINFORCEMENT

- Carbon fiber fabric.
- Embedded stainless steel helix wire AISI 304.
- High-strength plies of synthetic cord.

COVER

- Translucent silicone rubber (code silicone 3362PT), pharmaceutical and food quality.

STANDARDS

- Compliance: US Pharmacopoeia Class VI, FDA, BfR, E.P. 3.1.9. (European Pharmacopoeia), ISO 10993-4, -10, -11, non-cytotoxic acc. to ISO 10993-Part 5.

MAIN BENEFITS

- Platinum-cured silicone hose with non-stick properties.
- Made in Cleanroom ISO 14644-1 Class 8.**
- Safe solution for use in the aseptic environments and sanitary applications: utmost care is used starting from the choice of high-purity ingredients, production and storing procedures.
- Pharma-grade validation: tested in accordance with USP Class VI and EU Pharmacopoeia and FDA Standards.
- Hose in accordance with EC 1935/2004 and 2023/2006/EC (GMP).
- The MTG production cycle is free from animal derived ingredients, phthalates, adipates, nitrosamines, and materials subject to restrictions according to EC 1907/2006 (REACH).
- Non-plasticized hose.

TEMPERATURE RANGE

- From 0°C to +50°C.

NOTE

- In order to dissipate any electrostatic charges the hose must be grounded with the installation.

MARKING

MTG CLEARWAY HD PLATINUM MADE IN CLEANROOM ISO 14644-1 CLASS 8

TECHNICAL SPECIFICATIONS

SIZE TOLERANCES: I.D.: ISO 1307 - Wall thickness: +1/-0.5mm - Length: ISO 1307

Inner Diameter mm	Outer diameter mm	Wall thickness mm	Working pressure BAR	Burst pressure BAR	Min. bending radius mm	Vacuum BAR	Approx. weight kg/m	Max. length m
25	30	2.5	-	-	50	-0.7	0.214	10
38	44	2.0	-	-	80	-0.7	0.317	10
51	57	3.0	-	-	125	-0.7	0.482	10
63.5	70	3.3	-	-	190	-0.7	0.708	10

Other sizes and colours are available upon request. Please contact our Sales Department.
 Above technical data are referring to application at room temperature (+20°C).