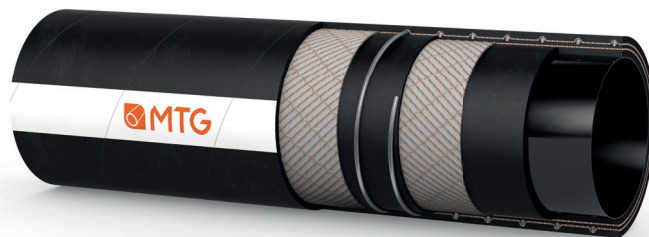



MANIFATTURA TUBI GOMMA S.p.A.

 Grisignano di Zocco, 36040 (VI) ITALY
 T. +39 0444.614755 | info@mtgspa.com
 www.mtgspa.com


APPLICATION

- Multipurpose suction and delivery hose for conveying a wide range of aggressive chemicals.
- Engineered to ensure dissipation of electrostatic charges not only on the surface, but also through the hose wall (Electrical resistance: $R < 10^9 \Omega$).

CONSTRUCTION

TUBE

- UPE (Ultra High Molecular Weight Polyethylene), antistatic ($R < 10^6 \Omega$), black, smooth.

REINFORCEMENT

- High strength plies of synthetic cord.
- Embedded steel helix wire.
- Copper wires on request.

COVER

- EPDM rubber (code 104N), black, antistatic ($R < 10^6 \Omega$), resistant to abrasion, ozone and weather, smooth, cloth finish.

STANDARDS

- Execution in accordance with EN 12115:2011.

CERTIFICATIONS

- Hose approved by the Institute Ineris, attestation nr. INERIS-16-AM-339, for use in ATEX areas.

TEMPERATURE RANGE

- In accordance with EN 12115:2011.
- Resistant to steam up to $+130^\circ\text{C}$ for max. 30 minutes.

SAFETY FACTOR

- ≥ 4 times working pressure up to ID 75 mm.
- ≥ 3 times working pressure over ID 75 mm.

ELECTRICAL PROPERTIES

- Electrical resistance through the hose wall: $R < 10^9 \Omega$.
- Identification symbol:
 - Ω/T for version without copper wires;
 - M/T for version with copper wires.

MARKING

- Embossed tape according to EN 12115:2011, lengthwise.

 HOSE TESTED FOR USE IN ATEX ZONES
 ATTESTATION NUMBER INERIS-16-AM-339

 MADE IN
 ITALY

TECHNICAL SPECIFICATIONS

SIZE TOLERANCES: Inner diameter: EN 12115 - Outer diameter: EN 12115 - Length: ISO 1307

Inner Diameter mm	Outer diameter mm	Wall thickness mm	Working pressure BAR	Burst pressure BAR	Vacuum BAR	Min. bending radius mm	Approx. weight kg/m	Max. length m
19	31	6.0	16	64	-0.90	125	0.60	40
25	37	6.0	16	64	-0.90	150	0.80	40
32	44	6.0	16	64	-0.90	175	1.00	40
38	51	6.5	16	64	-0.90	225	1.30	40
50	66	8.0	16	64	-0.90	275	2.00	40
51	67	8.0	16	64	-0.90	275	2.05	40
63.5	79.5	8.0	16	64	-0.90	300	2.70	40
75	91	8.0	16	64	-0.80	350	3.00	40
76	92	8.0	16	48	-0.80	350	3.05	40
100	118	9.0	16	48	-0.80	450	4.90	40
102	120	9.0	16	48	-0.80	450	5.00	40

 Chemical resistance acc. to MTG Chemical Resistance Chart. Above technical data are based on application at room temperature ($+20^\circ\text{C}$). Other sizes are available on request.

Cod. IT-M00034

 UPDATED: 10/18
 Rev: 004