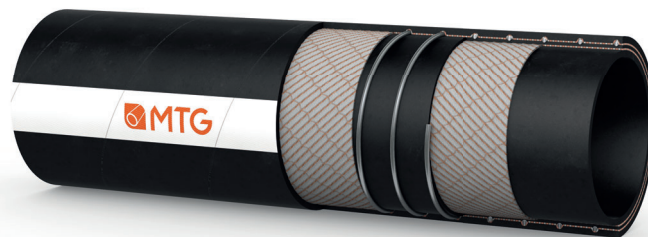


**MANIFATTURA TUBI GOMMA s.p.a.**

Grisignano di Zocco, 36040 (VI) ITALY  
T. +39 0444.614755 | info@mtgspa.com  
www.mtgspa.com



## APPLICATION

- Suction and delivery hose for conveying aggressive chemicals.

## CONSTRUCTION

### TUBE

- EPM rubber, black, smooth.
- Resistance: according to the MTG Chemical Resistance Chart.

### REINFORCEMENT

- Plies of synthetic cord.
- Embedded steel helix wire.
- Copper wires on demand.

### COVER

- EPDM rubber, black, smooth, antistatic ( $R < 10^6 \Omega$ ), resistant to abrasion, ozone and weather, cloth finish.

## TEMPERATURE RANGE

- From  $-40^{\circ}\text{C}$  to  $+100^{\circ}\text{C}$ .
- Resistant to steam up to  $+130^{\circ}\text{C}$  for max. 30 minutes.

## SAFETY FACTOR

- $\geq 3$  times working pressure.

## MARKING

**MTG FERRARA EPM**  $R < 10^6 \Omega$  **MADE IN ITALY**

## TECHNICAL SPECIFICATIONS

SIZE TOLERANCES: I.D.: ISO 1307 - Wall thickness: DIN 7715 T4 S2 - Length: ISO 1307

Inner Diameter mm	Outer diameter mm	Wall thickness mm	Working pressure BAR	Burst pressure BAR	Vacuum BAR	Min. bending radius mm	Approx. weight kg/m	Max. length m
13	23	5.0	10	30	-0.90	65	0.38	40
16	26	5.0	10	30	-0.90	80	0.47	40
19	30	5.5	10	30	-0.90	100	0.60	40
25	37	6.0	10	30	-0.90	125	0.76	40
32	44	6.0	10	30	-0.90	160	0.96	40
38	51	6.5	10	30	-0.90	200	1.28	40
45	59	7.0	10	30	-0.90	230	1.56	40
50	64	7.0	10	30	-0.90	250	1.70	40
60	75	7.5	10	30	-0.90	300	2.23	40
63.5	78.5	7.5	10	30	-0.90	325	2.34	40
70	86	8.0	10	30	-0.90	350	2.82	40
75	91	8.0	10	30	-0.90	400	3.00	40
80	96	8.0	10	30	-0.90	430	3.17	40
90	106	8.0	10	30	-0.90	500	3.60	40
100	116	8.0	10	30	-0.90	550	4.18	40
102	118	8.0	10	30	-0.90	550	4.26	40
125	145	10.0	10	30	-0.80	750	6.30	40
150	172	11.0	10	30	-0.80	900	8.70	20
152	174	11.0	10	30	-0.80	900	8.80	20
203	227	12.0	10	30	-0.80	1400	13.70	12

Other sizes are available upon request. Above technical data are referring to application at room temperature ( $+20^{\circ}\text{C}$ ).