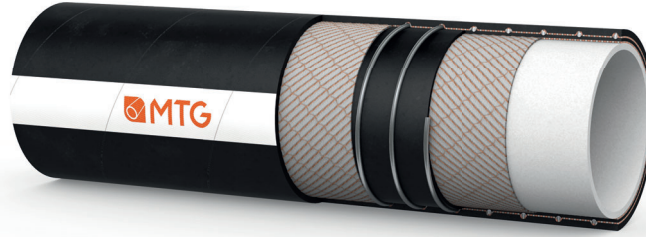




**MANIFATTURA TUBI GOMMA S.p.A.**  
 Grisignano di Zocco, 36040 (VI) ITALY  
 T. +39 0444.614755 | info@mtgspa.com  
 www.mtgspa.com



## APPLICATION

- Rubber hose for suction and delivery of hydrocarbon solvents with an aromatic content up to 70% .
- Suitable for conveying petrol, diesel, biodiesel blends including B100 and ethanol based fuels.

## CONSTRUCTION

### TUBE

- NBR2 rubber, light colour, smooth.

### REINFORCEMENT

- High strength plies of synthetic cord.
- Embedded steel helix wire.
- Copper wires on request.

### COVER

- NBR rubber, black colour, antistatic ( $R < 10^6 \Omega$ ), smooth, cloth finish.
- Resistant to abrasion, ozone, weather, fats and mineral oils.

## STANDARDS

- Execution in accordance with EN 12115:2011.

## TEMPERATURE RANGE

- In accordance with EN 12115:2011.
- Peaks up to +90°C depending on the fluids conveyed.

## ELECTRICAL PROPERTIES

- Identification symbol:
  - $\Omega$  for version without copper wires;
  - M for version with copper wires.

## SAFETY FACTOR

- $\geq 4$  times working pressure up to ID 75 mm.
- $\geq 3$  times working pressure over ID 75 mm.

## MARKING

- Embossed tape according to EN 12115:2011, lengthwise.



# TECHNICAL SPECIFICATIONS

SIZE TOLERANCES: Inner diameter: EN 12115 - Outer diameter: EN 12115 - Length: ISO 1307

Inner Diameter mm	Outer diameter mm	Wall thickness mm	Working pressure BAR	Burst pressure BAR	Vacuum BAR	Min. bending radius mm	Approx. weight kg/m	Max. length m
19	31	6.0	16	64	-0.90	125	0.62	40
25	37	6.0	16	64	-0.90	150	0.87	40
32	44	6.0	16	64	-0.90	175	1.00	40
38	51	6.5	16	64	-0.90	225	1.40	40
50	66	8.0	16	64	-0.90	275	2.00	40
51	67	8.0	16	64	-0.90	275	2.05	40
63.5	79.5	8.0	16	64	-0.90	300	2.80	40
75	91	8.0	16	64	-0.90	350	3.40	40
76	92	8.0	16	48	-0.90	350	3.45	40
100	118	9.0	16	48	-0.90	450	5.00	40
102	120	9.0	16	48	-0.90	450	5.10	40

Chemical resistance acc. to MTG Chemical Resistance Chart. Above technical data are based on application at room temperature (+20°C). Other sizes are available on request.